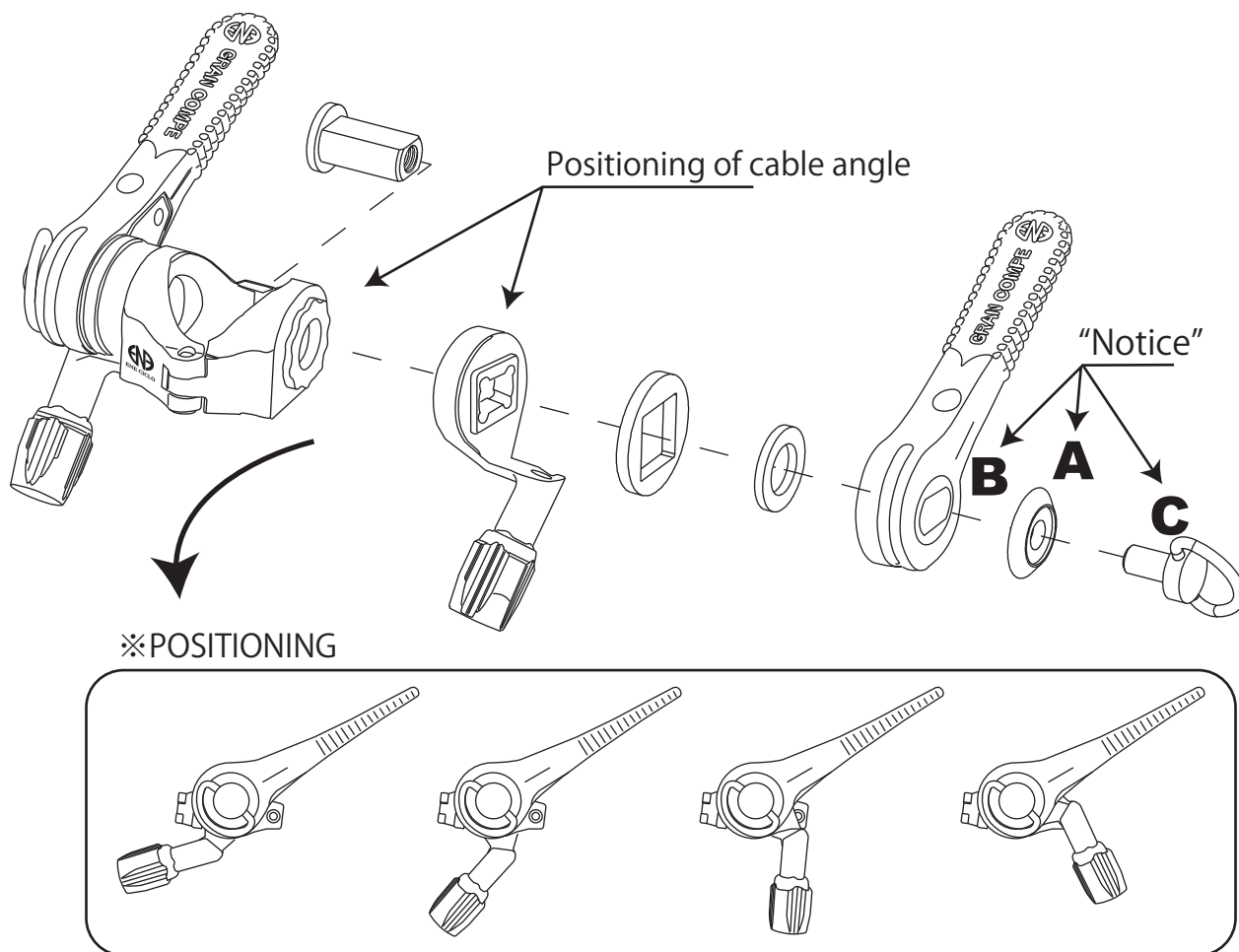


ENE STEM MOUNT SHIFTER



- Release the M5 bolt of mount(Same side of ENE CICLO Logo) to the Left side by 4mm Hexagon Alley key, then assembly the mount($\Phi 22.2$ mm position) on the $\Phi 22.2$ mm stem
 - Open the mounting clamp and assemble the shifter to the stem column.
Be sure that ENE CICLO logo on the clamp faces you when assembling the shifter.
 - Tighten the M5 bolt of mount by 4mm Hexagon Alley key with Tightening a torque 35-45kgf,cm
"Notice" : Make sure the projection of washer(A) back side stuck inside the Lever hole(B) before tighten the key(C)
 - Tighten the 5M bolt by 4mm Allen key wrench. Tightening torque: 5 - 6 Nm (50-60kgf • cm)
- NOTE: Make sure that the pointed projections on back side of the plastic washer (A) must be fitted into the hole of the lever (B) before tightening the fixing bolt (C)

