

**DIA-COMPE Brake Lever for Track Racing Bicycles**  
**GRAN COMPE SHOT LEVER**

**Please read this instruction carefully when installing parts.**

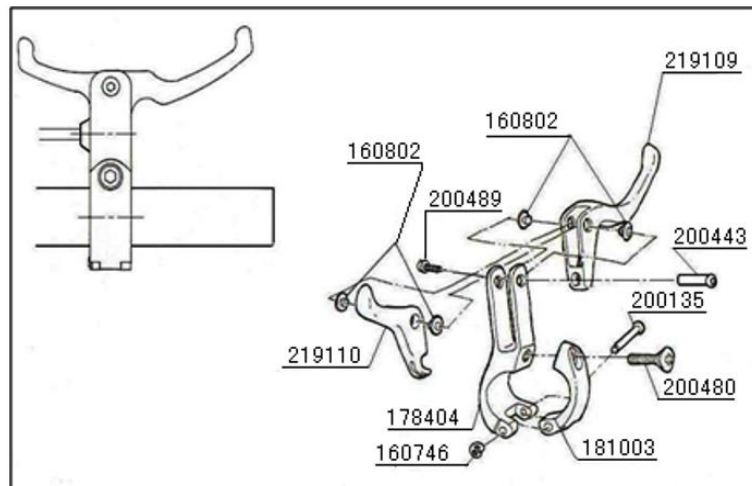
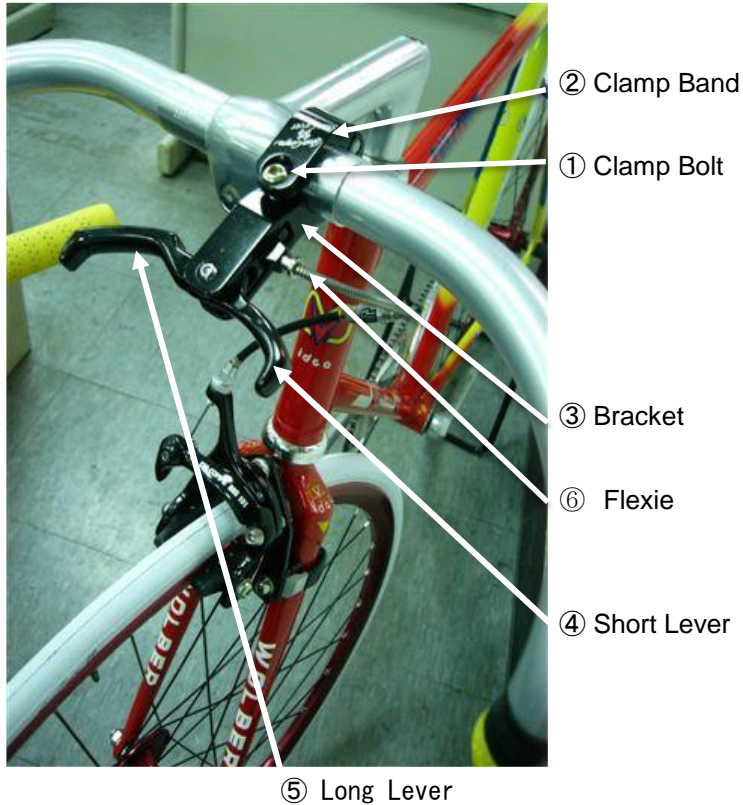
Installation

After taking the product out of package, please follow the installation manual.

1. Disassemble the clamp bolt ① from the clamp band, and set the brake lever onto a handle bar.  
 Use 5mm Allen key to tighten the bolt ①. Tightening torque: 8-9N·m {80-90kgf·cm}  
 Clamp diameter: φ 25.4mm (φ 22.2mm with reducers)
2. Pass the cable through cable hook on the short lever, and in the bracket along the long lever cable hole. Set the Flexie ⑥ on the inner cable and to the long lever.
3. Set a certain sized outer casing to the Flexie ⑥ through the inner cable, and assemble the inner cable to the brake. Make sure to check if the brake system work smoothly.

**[WARNING]**

1. This brake lever is designed as a sub-braking system for Track Racing bicycles, and its braking performance is different from normal braking system.
2. Be sure not to operate the 2 levers together. The short lever and the long lever do not work at a same time: the small lever pulls the cable, and the long lever pushes the casing separately.
3. The Shot Lever does not have a cable adjustment barrel. Please use the Flexie to adjust the brake cable tension.
4. Before and after riding, please check if each part of the braking system is securely assembled and is to be in a good shape.
5. Specifications are subject to change for improvement without notice.



DIA-COMPE TAIWAN CO., LTD.

No.62, 35th RD, Taichung Industrial Park,  
 Taichung, Taiwan R.O.C.

TEL: 886-4-2359-1117 FAX: 886-4-2359-3188

e-mail: diatech@ms15.hinet.net

August, 2008. Printed in Japan